

-40°C Biomedical Freezer

DW-40L262



Hydrocarbon (HC) Energy-saving

DW-40L262 adopts an efficient hydrocarbon (HC) inverter compressor system, which is more efficient and energy-saving and efficient, delivers a power consumption figure as low as 2.62KW·h/24h.



Environmentally Friendly

The HC system is a completely green refrigeration solution. With LBA foamed polyurethane insulation in line with European ROHS directive for environmentally friendly materials.



Low Noise

Optimized hydrocarbon system and structural noise reduction design, DW-40L262 noise 41 dB, super quiet and low noise.



Security Lock

Mechanical lock plus lock catch, the mechanical door lock can be opened with one key, and the door lock can be padlock. Secure and safe, suitable for multiple users.



AWTech

Advanced Worldwide Technologies

ISO 9001:2015

Официальный дистрибьютор

T. +7 (499) 322-99-34

T. +7 (800) 200-74-93

www.awt.ru, info@awtec.ru



Haier Biomedical
International



Haier Biomedical
International



@haiermedicalint



@haierbiomedicalint



Haier Biomedical
International

-40°C Biomedical Freezer DW-40L262

Product Features



Microprocessor

- Microprocessor electronic temperature controller, LCD digital temperature display, display precision is 0.1°C, temperature set point -20~-40°C.
- Multiple alarms including high and low temperature, sensor error, power failure, door ajar, high ambient and remote alarm.
- Alarm mode: sound and light alarm.
- It can be connected to remote alarm.



Multiple Interface Options

- Standard configuration: Remote alarm interface.
- Optional configuration: USB or RS485.



Fast Pull Down and Recovery Times

DW-40L262 cools down to -40°C from 25°C ambient in around 170 minutes due to the optimized HC refrigeration system.



Low Energy Consumption

The power consumption of DW-40L262 decreases from 4.3 KW·h/day to 2.62 KW·h/day, and the energy consumption is reduced by more than 35%.



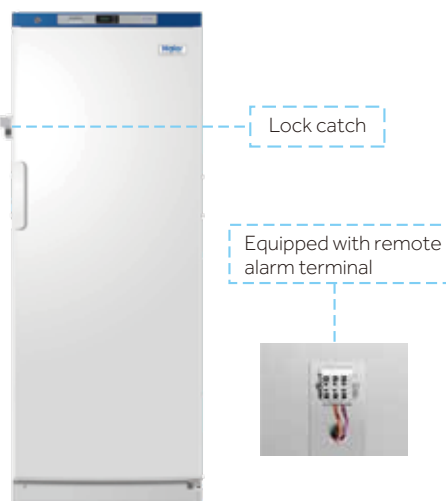
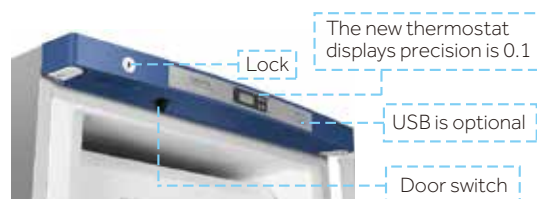
Low Noise

DW-40L262 noise decreases to 41dB, quiet and low noise.



Porthole

There is a standard access port (25mm inside diameter) on the left side of the unit, which is convenient for users to test independently.



CODE MODEL	W0	W1	W2	W3	D0	D1	D2	H0	H1
DW-40L262	700mm	657mm	480mm	450mm	705mm	465mm	313mm	1665mm	1430mm

Key

W0=TOTAL WIDTH
W1=FREEZER WIDTH
W2=INNER CABINET WIDTH
W3=INNER CABINET SHELF WIDTH
D0=TOTAL DEPTH
D1=INNER CABINET DEPTH
D2=INNER CABINET SHELF DEPTH
H0=TOTAL HEIGHT
H1=INNER CABINET HEIGHT

Specifications

Defrost Mode	Refrigerant	Sound Level (dB(A))	Cooling Performance (°C)	Temperature Range (°C)	Power Supply (V/Hz)	Power (W)
Manual	HC	41	-40	-20~-40	220-240/50/60	310

Electrical Current (A)	Power Consumption (kW·h/24h)	Capacity (L/Cu.Ft)	Net/Gross Weight (approx)(kg)	Internal Dimension (W*D*H)(mm)
2	2.62	262/3.2	88/93	480*465*1430

Exterior Dimension (W*D*H)(mm)	Container Load (20'/40'/40'H)	Alarms	Certification
700*705*1665	21/45/45	High/Low Temperature, Remote Alarm, Power Failure, Sensor Error, High Ambient Temperature, Door Ajar	CE